

# Thomas Phifer and Partners at Clemson University

---

2013-05-03



*Thomas Phifer and Partners designed an addition to the Lee Hall College of Architecture at Clemson University.  
Photo: Scott Frances*

Located in upstate South Carolina, on the Clemson University campus in the Blue Ridge Mountains, a new steel-and-glass addition to the Lee Hall College of Architecture provides generously daylit spaces for students and faculty.

The 55,000-square-foot (5,100-square-meter) building was designed by Thomas Phifer and Partners as a highly energy-efficient facility that intermingles the studios, classrooms, and offices of four major departments in response to the close-knit community of the school.



*Front facade of Lee Hall. Photo: Scott Frances*

The building's metal roof structure is supported by a forest of branched steel columns and its long, main facade is almost entirely glazed. The main facade, together with round skylights spaced across the roof and a consistently white interior finish, help to reflect daylight deep into the building.

The Lee Hall College of Architecture received an Honor Award in the Architecture category of the [2013 AIA National Design Awards](#).

### **Jury Comments**

*"The rigorous clarity in the organization and assembly of this building is perfectly suited to an educational environment for architecture."*



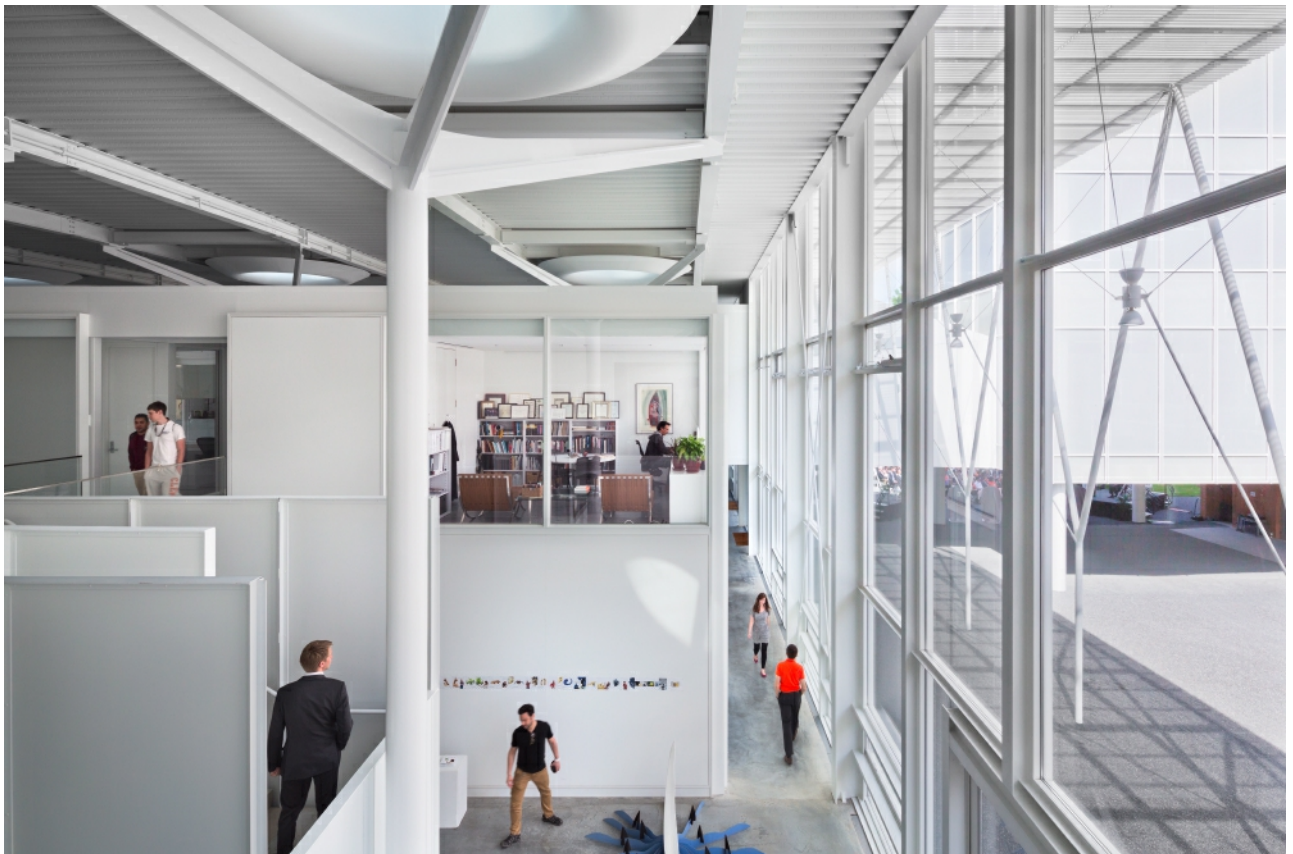
*"It is an exceptional work that surrounds students with a seamless integration of programmatic goals, energy efficiency, and creative tectonics."*



*Upper-level view inside the Lee Hall addition. Photo: Scott Frances*

*"The lighting systems and dynamism of the structure will serve as great teaching tools for students."*

*"Amazing details/textures/light-shadow play/expressive systems lend themselves to a fantastic quality of space."*



*Looking along the front facade. Photo: Scott Frances*

## Project Credits

- **Associate Architect:** McMillan Pazdan Smith Architecture
- **Civil Engineer:** Dutton Engineering
- **Mechanical Engineer:** Talbot and Associates
- **Structural Engineer:** Skidmore, Owings and Merrill
- **Environmental Consultant:** Transsolar
- **General Contractor:** Holder Construction
- **Landscape Architect:** Pond and Company



*Overview of the Lee Hall College of Architecture addition. Photo: Scott Frances*

---

Source: Architecture Week People & Places Blog